

# Product Information Sheet

COMMISSION DELEGATED REGULATION (EU) 2019/2015 with regard to energy labelling of light sources

**Supplier's name or trade mark:** AVIDE

**Supplier's address:** Bramcke Hungary Kft., Kishatár utca 17, 4031 Debrecen Hajdú-Bihar, HU

**Model identifier:** ABCG4EW-1.2W

## Type of light source:

Lighting technology used:	LED	Non-directional or directional:	NDLS
Light source cap-type (or other electric interface)	G4		
Mains or non-mains:	MLS	Connected light source (CLS):	No
Colour-tuneable light source:	No	Envelope:	-
High luminance light source:	No		
Anti-glare shield:	No	Dimmable:	No

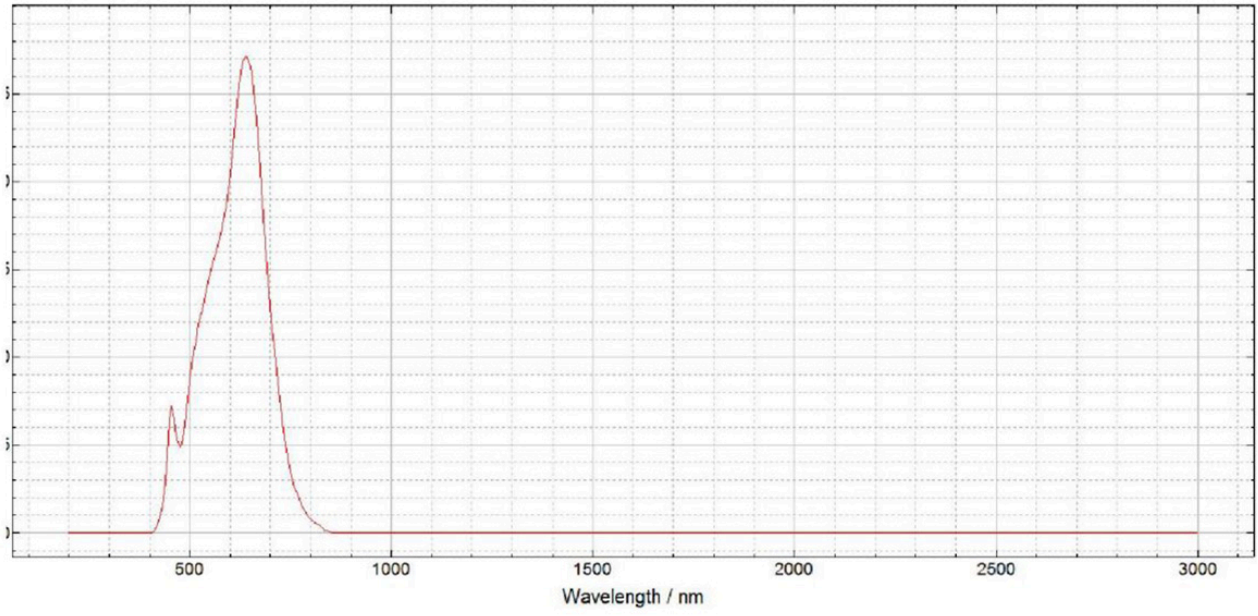
## Product parameters

Parameter	Value	Parameter	Value
<b>General product parameters:</b>			
Energy consumption in on-mode (kWh/1000 h), rounded up to the nearest integer	2	Energy efficiency class	G
Useful luminous flux ( $\phi_{use}$ ), indicating if it refers to the flux in a sphere (360°), in a wide cone (120°) or in a narrow cone (90°)	90 in Sphere (360°)	Correlated colour temperature, rounded to the nearest 100 K, or the range of correlated colour temperatures, rounded to the nearest 100 K, that can be set	2 700
On-mode power ( $P_{on}$ ), expressed in W	1,2	Standby power ( $P_{sb}$ ), expressed in W and rounded to the second decimal	0,00
Networked standby power ( $P_{net}$ ) for CLS, expressed in W and rounded to the second decimal	-	Colour rendering index, rounded to the nearest integer, or the range of CRI-values that can be set	80
Outer dimensions without separate control gear, lighting control	Height	31	Spectral power distribution in the range 250 nm to 800 nm, at full-load
	Width	10	
	Depth	10	
			See image in last page

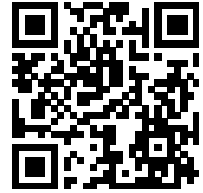
parts and non-lighting control parts, if any (millimetre)				
Claim of equivalent power <sup>(a)</sup>	Yes	If yes, equivalent power (W)	10	
		Chromaticity coordinates (x and y)	0,340 0,350	
<b>Parameters for LED and OLED light sources:</b>				
R9 colour rendering index value	60	Survival factor	1,00	
the lumen maintenance factor	0,94			
<b>Parameters for LED and OLED mains light sources:</b>				
displacement factor (cos $\phi_1$ )	0,91	Colour consistency in McAdam ellipses	5	
Claims that an LED light source replaces a fluorescent light source without integrated ballast of a particular wattage.	-(b)	If yes then replacement claim (W)	-	
Flicker metric (Pst LM)	0,1	Stroboscopic effect metric (SVM)	0,1	

(a)-: not applicable;

(b)-: not applicable;



Model placed on the Union market from 28/02/2020



**EPREL registration number:** 883190

<https://eprel.ec.europa.eu/qr/883190>

**Supplier:** Bramcke Hungary Kft. (Importer)

**Website:** <https://www.bramcke.com>

**Customer care service:**

**Name:** Bramcke Hungary Kft.

**Website:** <https://www.bramcke.hu/>

**Email:** [info@bramcke.com](mailto:info@bramcke.com)

**Phone:** + 3652794696

**Address:**

Kishatár utca 17  
4031 Debrecen  
Hungary